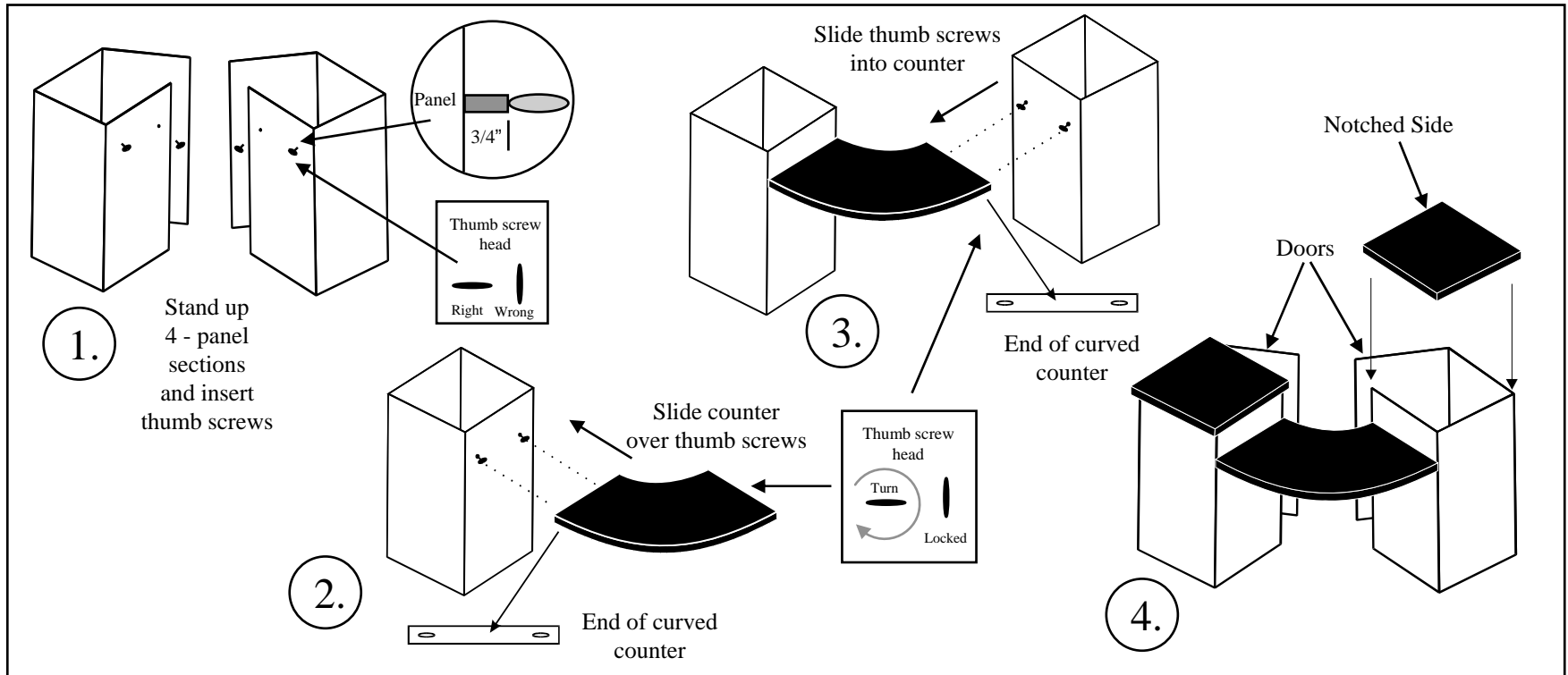


Double Pedestal with Curved Counter Set-up Instructions



1.

Stand two 4-panel sections up and insert thumb bolts into panel with threaded holes on each section. Thumb screw heads should be horizontal and 3/4" of the neck showing.

2.

Slide cut outs on end of curved counter over thumb screws on one of the panel sections. Turn thumb screws vertical to lock counter on.

3.

Slide the second panel sections over to the end of the counter that is attached. Slide thumb screws through cut outs on end of counter and turn vertical to lock.

4.

Attach square counters on top of panel sections. notched side towards the inside of the curve.